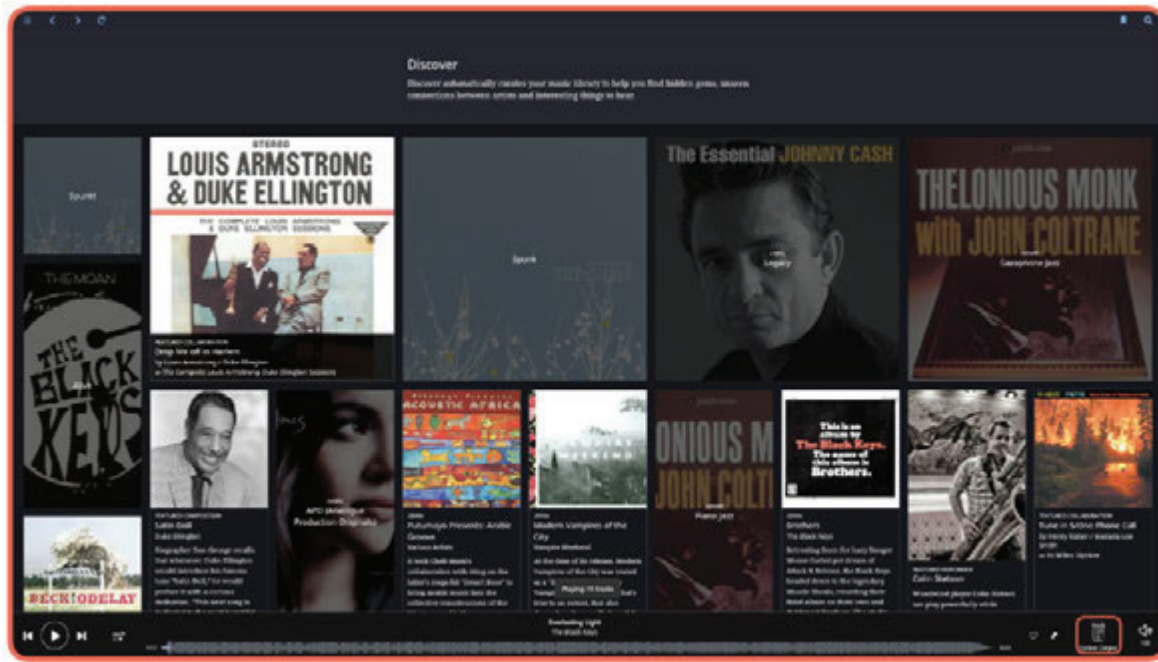


Chord Poly Wireless Streamer

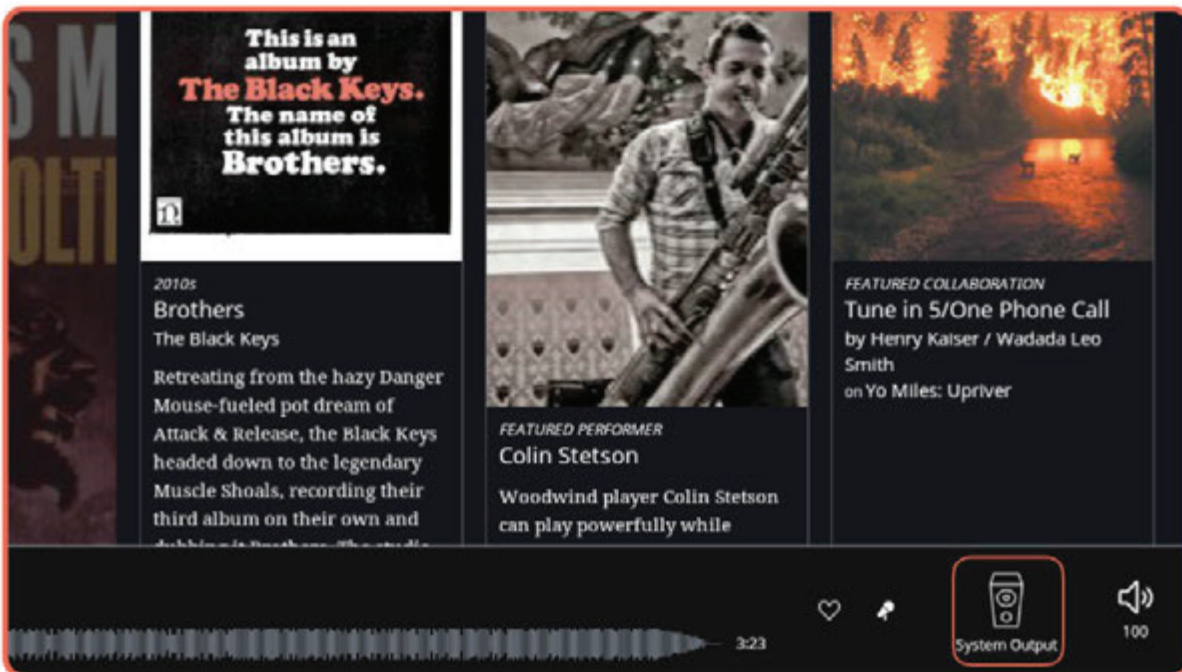
Setting Up with Roon Software



Once Poly has been connected to a wireless network, it can be set up as a playback device in Roon.



On any browsing screen in Roon, look for a Speaker Icon in the lower righthand corner. Locate the icon and click on it.



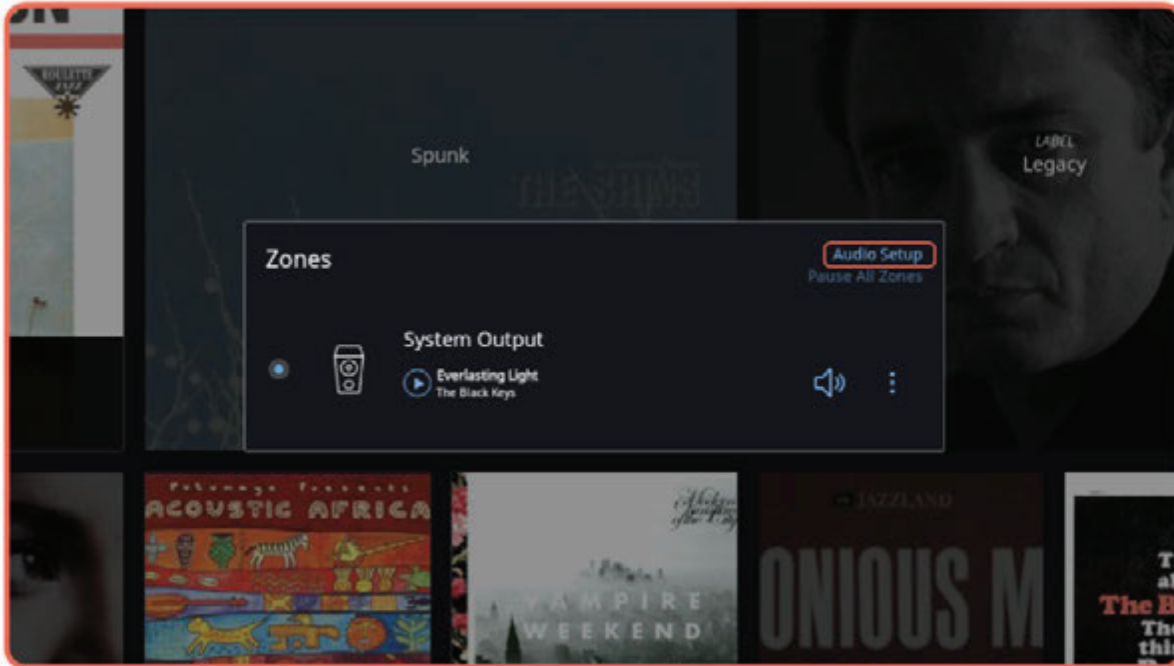
Chord Poly Wireless Streamer

Setting Up with Roon Software

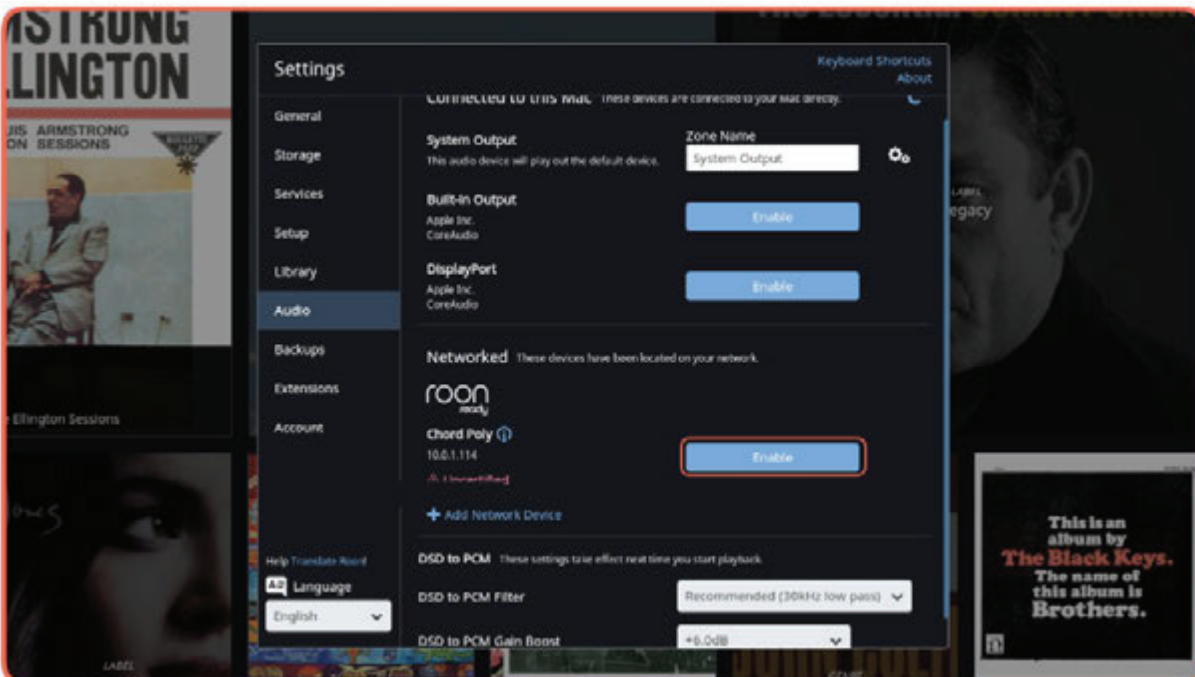


Chord Electronics Ltd.

Click on 'Audio Setup.'



In the Networked section you should see a Roon Ready device named Chord Poly. Click the 'Enable' button next to it.

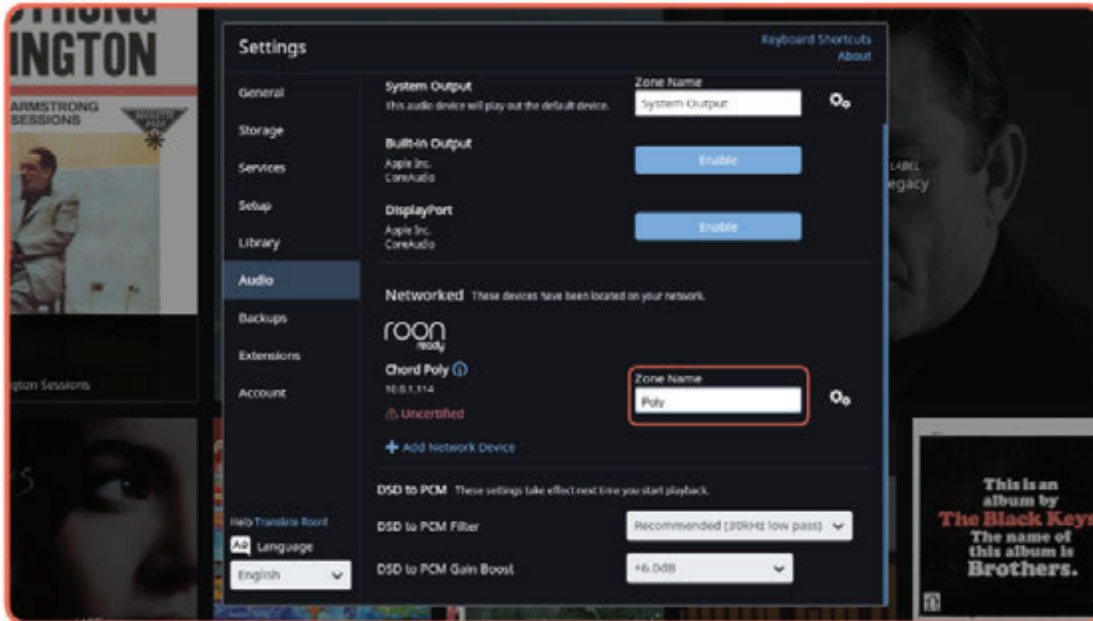


Chord Poly Wireless Streamer

Setting Up with Roon Software



Type a name into the 'Zone Name' field to easily identify Poly inside the Roon interface. Poly is now set up as an audio output device. Click anywhere outside of the Settings window to close it.



Choose Poly as the active zone by clicking on the radio button to the left side of Poly. Your Poly is now set up for use with Roon. Click anywhere outside of the Zones window to close it.

